



NanoTM

BEST THERMAL
CAMERA FOR YOUR
SMARTPHONE AT
THE BEST PRICE

PROFESSIONAL TOOL. PERSONAL BUDGET.

Transform your smartphone into a professional-grade thermal imaging camera with Seek Nano. Capture stunning thermal photos and videos, discover unseen worlds, and tackle problems invisible to the naked eye. Ideal for DIY enthusiasts, professionals in the field, and anyone curious about their environment. The Seek Nano offers an unmatched combination of image clarity, quality, and affordability.

A GIANT LEAP IN IMAGE CLARITY

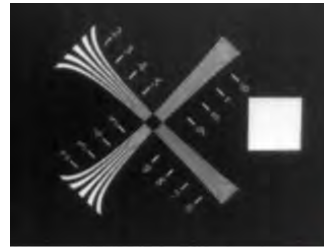
The Nano marks a significant leap forward in both image quality and affordability compared to our first-generation camera. Equipped with SV1 Image Optimization, it offers enhanced detail, sharper contrast, and clearer edges for superior thermal imaging.



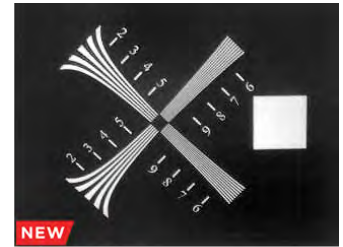
Compact
Released in 2014



Nano 200
Released in 2024



CompactPRO
Released in 2016



Nano 300
Released in 2024

WORKS ON ALL PLATFORMS

The Nano is available with two types of connectors for iPhones: a Lightning connector for models up to the iPhone 14, and a USB-C connector for the iPhone 15 and newer. Additionally, there is a USB-C version of the Nano designed for compatibility with top Android models.



QUICK TO SETUP, EASY TO USE



1. Download the Seek Nano App



2. Connect the camera to your device

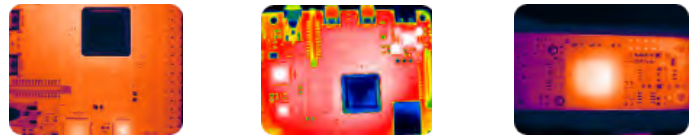


3. Start imaging



GET CLOSE-UP CLARITY WITH THE MACRO LENS ACCESSORY

Enhance your Nano with our macro lens accessory, designed to bring small thermal details into sharp focus. Ideal for close-up inspections, this lens allows you to capture precise thermal images of small electrical components.



PROTECT YOUR TOOL WITH THE ACCESSORY CASE

The case holds a Nano and macro lens, providing a simple way to protect and carry your camera.



CAPTURE AND SHARE PHOTOS AND VIDEOS

The Nano captures high-quality photos and videos, making it easy to share your findings with friends, family, co-workers, and clients.

ALWAYS READY. NO BATTERIES. NO CHARGING REQUIRED.

Powered directly through your phone with ultra-low power consumption, it's always ready when you are, ensuring you never have to pause for a power-up.



100%



TECHNICAL SUMMARY

CAMERA MODEL	NANO 200			NANO 300		
RESOLUTION	200 X 150			320 X 240		
FIELD OF VIEW	35° X 26°			56° X 42°		
PART NUMBER	CW-DBAX	CW-ABAX	LW-ABAX	CQ-ADAX	CQ-ABAX	LQ-ABAX
CONNECTOR TYPE	USB-C	USB-C	LIGHTNING	USB-C	USB-C	LIGHTNING
COMPATIBILITY	ANDROID™	APPLE iOS*		ANDROID™	APPLE iOS*	

COMMON CAMERA SPECIFICATIONS	DESCRIPTION
LENS	4.0mm
FOCUS	FIXED
SPECTRAL RANGE	7.8 - 14 MICRONS
THERMAL SENSITIVITY	< 35 mK @ 77°F (25°C) W/ SV1 IMAGE OPTIMIZATION
THERMAL ACCURACY	THE GREATER OF ±9°F (±5°C) OR 5%
TEMPERATURE RANGE	-4°F TO 626°F (-20°C TO 330°C)
FRAME RATE	25 HZ (FRAME RATE DEPENDENT ON PHONE PROCESSOR)
SIZE: H X W X D	1 X 1 X 0.86 (INCH.) (25 X 25 X 22 mm)
WEIGHT	0.45 Oz. (13 g)

APP FUNCTIONALITY	DESCRIPTION
MOBILE APP	FREE SEEK NANO MOBILE APP FOR iOS® AND ANDROID™
COLOR PALETTES	7 COLOR PALETTES
THERMAL TOOLS	SPOT TEMPERATURE, MINIMUM/MAXIMUM SPOT TEMPERATURE, PICTURE-IN-PICTURE (PIP)
IMAGE CAPTURE	YES
VIDEO CAPTURE	YES

ACCESSORIES	DESCRIPTION
MACRO LENS	CLOSE UP OBSERVATION OF COMPONENTS - CHANGES FOCUS POINT TO WITHIN 2 INCH. (50 mm)
CARRY CASE	PROTECTIVE CASE FOR YOUR NANO AND MACRO LENS

For support and user guides visit thermal.com

Seek more at thermal.com

6300 Hollister Ave, Santa Barbara, CA 93117

Seek Thermal engineers, designs and manufactures high quality thermal imaging products and core platforms for consumer, commercial, and heat sensing IoT data applications. With headquarters in Santa Barbara, California, the global hub of thermal imaging innovation, the company has developed breakthrough thermal imaging camera cores that will enable a range of affordable products for use at home, work and play. For more information visit thermal.com and follow #seekthermal on Instagram and @seekthermal on Twitter.