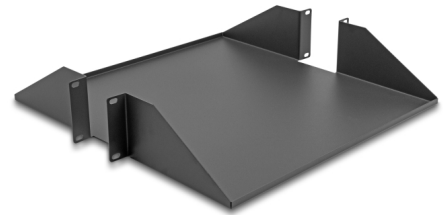


# Delock 19" Shelf double-sided up to 46 kg from 500 mm depth 2U dark grey

## Description

This shelf by Delock is suitable for installation in a **19" network cabinet**. The shelf provides the **perfect storage surface** on two sides for components that cannot be installed and leaves a **neat and tidy impression** in the network cabinet.



**Item no. 66748**

EAN: 4043619667482

Country of origin: China

Package: Box

## Specification

- For mounting in 19" network cabinet, 2U
- Shelf area: ca. 454 x 431 mm
- Load capacity up to 46 kg
- Steel frame with 1.5 mm thickness
- Weight: ca. 3 kg
- Colour: dark grey
- Material: sheet steel
- Dimensions (LxWxH): ca. 483 x 457 x 88 mm

## Package content

- 19" shelf
- 8 x screws
- 8 x caged nut
- 8 x washers

## Images



### Physical characteristics

Material:	sheet steel
Length:	483 mm
Width:	457 mm
Height:	88 mm
Colour:	dark grey