



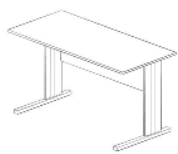
Serie 200



MÖBELPARTNER  
schöner einrichten

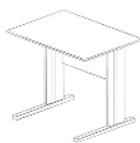
in Kooperation mit Schomburg Möbel GmbH

# TYPENPLAN



Schreibtisch  
Type 210

B = 140,0 cm  
H = 75,0 cm  
T = 65,0 cm



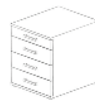
Anstelltisch  
Type 215

B = 90,0 cm  
H = 75,0 cm  
T = 65,0 cm



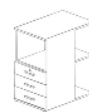
Eckplatte  
Type 216

B = 65,0 cm  
T = 65,0 cm



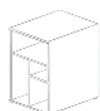
Container  
Type 218

B = 42,0 cm  
H = 52,0 cm  
T = 50,0 cm



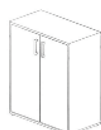
Container  
Type 220

B = 40,0 cm  
H = 75,0 cm  
T = 65,0 cm



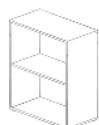
Container  
Type 225

B = 50,0 cm  
H = 75,0 cm  
T = 65,0 cm



Drehtürenschränk  
Type 240

B = 65,0 cm  
H = 77,0 cm  
T = 34,0 cm



Regal  
Type 245

B = 65,0 cm  
H = 77,0 cm  
T = 34,0 cm



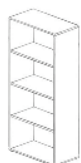
Regal  
Type 246

B = 40,0 cm  
H = 77,0 cm  
T = 34,0 cm



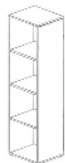
Drehtürenschränk  
Type 250

B = 65,0 cm  
H = 147,0 cm  
T = 34,0 cm



Regal  
Type 255

B = 65,0 cm  
H = 147,0 cm  
T = 34,0 cm



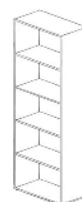
Regal  
Type 256

B = 40,0 cm  
H = 147,0 cm  
T = 34,0 cm



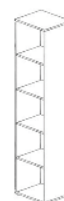
Drehtürenschränk  
Type 260

B = 65,0 cm  
H = 182,0 cm  
T = 34,0 cm



Regal  
Type 265

B = 65,0 cm  
H = 182,0 cm  
T = 34,0 cm



Regal  
Type 270

B = 40,0 cm  
H = 182,0 cm  
T = 34,0 cm



Drehtürenschränk  
Type 280

B = 65,0 cm  
H = 111,0 cm  
T = 34,0 cm



Regal  
Type 285

B = 65,0 cm  
H = 111,0 cm  
T = 34,0 cm



Regal  
Type 286

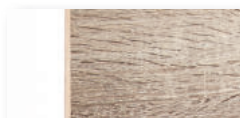
B = 40,0 cm  
H = 111,0 cm  
T = 34,0 cm



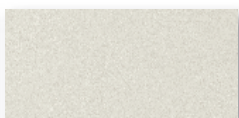
Drehtürenschränk  
Type 295

B = 40,0 cm  
H = 111,0 cm  
T = 34,0 cm

## FARBVARIANTEN



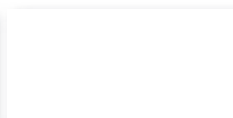
Weiß- Sonomaeiche



Lichtgrau



Buche Samerberg



Weiß

